

Liberty 16s

Warranty Registration
How It Works/ Product Information
Installation Instructions and Videos
Safety Rules
Troubleshooting

Congratulations on your decision to purchase a Tactical Trap. You've made a wise decision and we're grateful you've given us the opportunity to serve you as a customer.

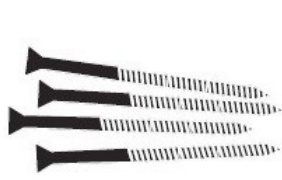
If you have any questions about your product don't hesitate to contact our support team via email at support@tacticaltraps.com.

Step 1: Warranty Registration

Before you begin, please take a minute and register your warranty by going to tacticaltraps.com/warranty
Do this now while you're thinking about or you run the risk of forgetting to do it later.

Step 2: What's included?

Included with your Liberty 16s compact should be...



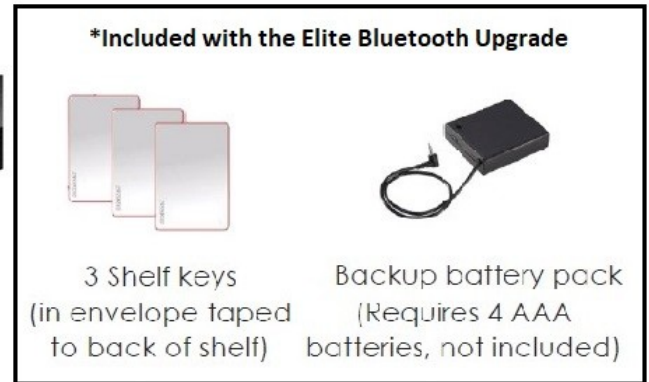
Mounting screws



LED light
(circle or strip)



Foam pad



If your package is missing any of these items please email us at parts@tacticaltraps.com

If your package is missing any of these items, please email us at parts@tacticaltraps.com

Step 3: How the Tactical Trap Works

If you selected the Standard Push to Open Unit, you'll lift up on the bottom of the shelf marked with an orange sticker dot. After pushing up release the bottom for the door to drop down. Skip to Step 6.

On units upgraded to the ELITE Bluetooth Enabled RFID locking system, take out any one of the RFID cards included and hold it 1/4" over the orange sticker dot on the top of the shelf. It will beep once; the lock will automatically disengage and the shelf door will open.

You may need to apply slight upward pressure if the shelf door doesn't open on its own. Adjustment for this is at tacticaltraps.com/install

NOTE: Manager and User keycards work the same. The Buzzer/Sound Setting card will turn off the beep.

NOTE: You can remove the orange sticker dot after you get used to where the trigger point to open the lock is located.

Also, the key cards included can be hidden under decorations you place on top of your shelf or in your wallet, so you don't have to worry about misplacing them. DO NOT cut the cards in any way, it will deactivate them.

Step 4: Batteries

The RFID lock runs on 4 AAA batteries that should be changed every six or so months, depending on use. To change the batteries simply remove thumb screw and battery compartment cover on the RFID and open the unit. Then remove the old batteries and replace with good quality new alkaline batteries.

IMPORTANT: When the lock battery gets low, you will hear a series of beeps when you place the key over the top of the shelf. When you hear that series of beeps... it's time to change the batteries.

Step 5: Battery Backup Pack

If for some reason the batteries in your lock die before you change them - no problem! You can always get to your guns by using the battery backup pack that came with your purchase.

Here's what you do:

- 1.) Place 4 AAA batteries inside your battery backup pack.
- 2.) Locate the small auxiliary hole on the bottom of your shelf. Other units like flags, tables and coat racks will have the hole placed as discreetly as possible in other locations.
- 3.) Plug the backup pack into the hole as tightly as it will fit.
- 4.) Scan one RFID card over the locking mechanism (where the orange dot sticker was) just like you normally would, and your shelf will open.
- 5.) When your shelf is open, change your lock batteries.

Step 6: LED light

The included LED light is motion detected, meaning there isn't an on and off switch. When the shelf is closed the light will shut off. When it opens it will turn on by itself.

To mount your light, you will peel and stick either the long magnet (strip light) or the small round sticker (round light) on the top/inside of the shelf, making sure it's placed away from the lock. Both lights are upgraded versions; we send the style of light based on what our vendor has sent us.

Step 7: Tools Needed For Installation

1. Stud Finder
2. Tape measure
3. Pencil
4. Level
5. Drill
6. 1/8" drill bit
7. Safety glasses
8. Help from a buddy
9. FOR COMPACT SHELF: Wall anchors (50lb, not included)

Step 8: Installation Instructions

Note: For a video walkthrough go to TacticalTraps.com/install

1. Figure out where you want to hang the shelf. Some people put it in their bedroom below a TV. Others place it in the foyer by the door or even in a home office. The shelf will blend in as everyday furniture so the possibilities are endless. Just make sure the wall is suitable for mounting the product, meaning 2x4 or 2x6 wood construction behind the drywall or plaster.

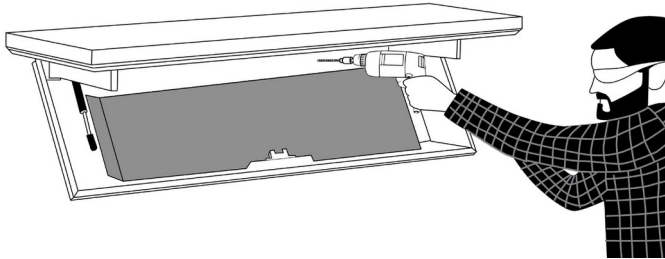
2. Find the one stud in the wall using a stud finder. This will be your main anchor point for the shelf. Because of the length of the shelf, you'll only be using one stud as your main anchor point and wall anchors to secure the other side. If you don't have a stud finder, I suggest you purchase one at any home improvement store. My favorite is the magnetic stud finder. It runs about 7 bucks and does a better job than 99% of the more expensive electronic ones.

If that's not an option, then you can locate the studs by measuring from an outlet in the wall. Simply remove the outlet cover and inspect the outsides of the box. One side will usually be nailed to a stud and the other side will be hollow. Then measure out to the left or right at 16" intervals. US building code requires wall studs to be spaced at least 16" on center (meaning the center of the studs.)

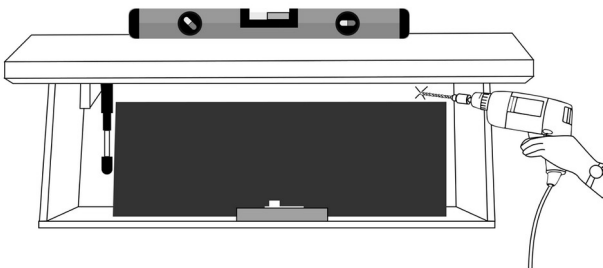
This will help you locate studs. However, recognize that in locations near doors/windows or openings there may be a stud at less than a 16" interval.

3. Mark your stud locations on the wall and then transfer them onto your shelf. Drill pilot holes through the shelf in the marked locations using a drill bit.

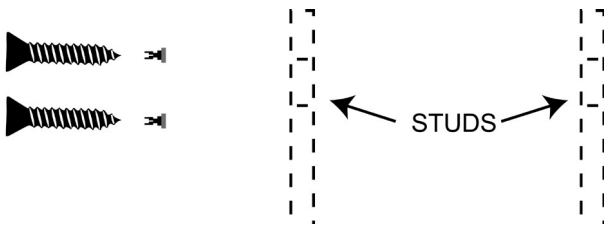
4. With help... pick up the shelf and line up the pilot holes on your shelf with the marks on the wall. Next, drive a one wood screw (2-inch length min) as close to ½ inch from the top of the wood mounting plate as possible.



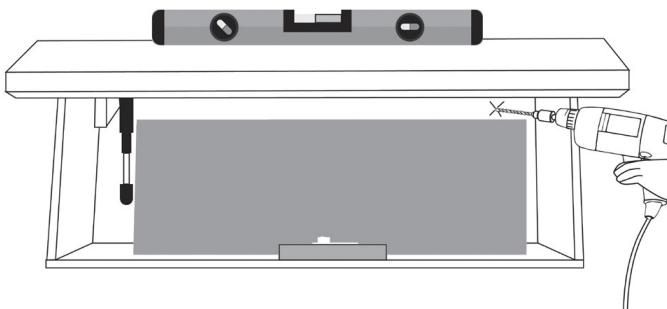
Once secured, level the shelf and drill two pilot holes through the back



Next, unscrew the shelf from the wall and install the wall anchor backs to the wall.



Once you have those in place, line up the holes in the shelf with the marks in your wall and your wall anchors. Then screw the shelf to the stud and wall anchors that you already installed.



We recommend two wood screws into the stud and two 50lb wall anchors on the other side. The shelf should be tight against the wall and feel very sturdy. This is crucial - if the shelf isn't tight against the wall, do not store your firearms in it.

Step 9: Cutting the Foam to Fit Your Accessories

Note: For a video walkthrough, go to: tacticaltraps.com/install

Lay the foam insert flat on a table. MAKE SURE ALL YOUR FIREARMS ARE UNLOADED AND THE CHAMBER IS EMPTY! Lay your gear on top however you want it. Push down snugly and trace around your items using a marker. Then cut the foam carefully using a sharp and brand-NEW razor/ utility knife. We recommend you cut at least 3/4 of the foam for a handgun.

The more time you take to do this correctly, the better your gear will fit. Don't be sloppy with this because the foam is designed to hold your gear in place when the unit lowers. If the cuts are not precise you run the risk of your gear falling out when opening the shelf.

Now take the magnet that came with your unit and rest it inside the cutout area. Take the small screw that came with your magnet and drill it into the magnet hole, attaching it firmly. The magnet provides more holding power for your firearms, this is necessary because of the way the rack is mounted and displays your firearms.

If you wish to purchase more magnets, please visit www.tacticaltraps.com.

After you get everything cut out, remove the adhesive backing and carefully place it in your shelf making sure it's lined up correctly.

NOTE: The more cavities you cut out, the less adhesive backing you will have to hold your gear in place. Overloading the rack is counterproductive - never exceed 15lbs of gear inside. This isn't a storage bin!

Step 10: Safety Rules to Consider

1. Don't store your firearm with a live round in the chamber. Remember a tactical trap is not a safe; and although it's sturdy and well-built, it can be knocked off the wall or broken with enough force.

In the unlikely event of that happening your gun could send a round through your house after being dropped! Yes, many new firearms are equipped with a drop safety to prevent this, but this is still something you should consider especially if you live in a home with children. You can take back a lot of things in life but a bullet is not one of them. Please remember that and be responsible when you store your gear.

2. Our products are designed to work with standard 2x4 or 2x6 wood construction walls that are 16" on center. Does that mean the shelf will not work on any other type of wall? Of course not, but the installation of this product on a different wall material (concrete, steel studs, etc.) will involve a different set of instructions and processes that vary depending on several factors.

If you plan on installing this product on a wall other than standard 2x4/2x6 wood construction wall, we suggest you hire a licensed contractor to do that for you.

3. If you have children living in your home it would be a good idea to move your firearms into a locked safe when you are not home or by your Tactical Trap. Most children will not understand how to work the product, but it's better to be safe than sorry. Plus, the whole purpose of a Tactical Trap is for quick access and if you're not home or by the shelf... it makes no sense to leave your firearm inside of it.

4. Even though it takes around 300lbs of force to pry the shelf open...it is not intended to serve as a substitute for a government-regulated gun safe. A lock, any lock in the world including a bank vault can fail. Is it likely? No, but neither is lightning striking you, but it can happen. So, if you have really young children living or visiting your home...mount the shelf high enough so they can't reach or hang on it. If you have older children living or visiting the house that you don't want messing

around with your guns...take them out of the shelf when you're not home and lock them in a safe. Use

common sense when storing your firearms and you'll be just fine.

Step 11: Troubleshooting

Q: My shelf won't close.

A: Verify nothing is preventing it from shutting. If it's clear, then you'll need to do an easy hinge adjustment. When our shipper is rough on packages it sometimes tweaks the shelf which is harmless. To fix this problem go to www.tacticaltraps.com/install and watch the "shelf won't close video".

Q: My shelf won't open.

A: Depending on how you mounted it, you might need to apply slight upward pressure to the bottom to disengage the lock. This is perfectly normal.

Q: One part of my shelf is higher than the other side which makes it look crooked even though it is perfectly level.

A: Go to www.TacticalTraps.com/install and check out the video titled "Crooked Shelf Adjustment" for an easy fix.

Q: How do I get a part that was missing with my order?

A: Email parts@tacticaltraps.com.

For other questions not answered here, see www.TacticalTraps.com/faqs