



The Tactical Clock

How It Works/ Product Information
Installation Instructions and Videos
Safety Rules
Troubleshooting

Congratulations on your decision to purchase a Tactical Trap. You've made a wise decision and we're grateful you've given us the opportunity to serve you as a customer. If you have any questions about your product don't hesitate to contact our support team via email at support@tacticaltraps.com

Step 1: What included with your Tactical Clock

- **2 key cards.** The key cards will be used to open the unit. Reference the orange dot on the clockface for the trigger point. This is where you will place your card. (The dot can be removed once familiar with the trigger point)
- **Buzzer Setting Card:** This can be used to silence your lock. If you don't want your lock to beep when its open- swipe this card over the trigger point and it will be silenced. This will also disable the low battery warning but you can monitor that in the app.
- **Mounting screws.** Use these to mount the clock housing as per instructions below
- **Battery backup pack.** This can be used to open the clock if the batteries die. Simply plug it into the port on top and then swipe the keycard. The backup requires 4 AAA batteries before use.
- **Foam insert:** This is used to hold your firearm.
- **Magnet:** The magnet should be placed in the foam cut to hold your gun in place when the unit opens. The foam is not enough.

If your package is missing any of these items, please email us at support@tacticaltraps.com

Step 2: Unpacking the Tactical Clock

1. Locate the 3 cam locks under the roman numeral 12, 4 & 8. Turn the cam locks to the left to unlock the clock Face.
2. Locate the small yellow envelope with the key cards inside. Take one card and scan it over the orange sticker dot to drop the interior drawer.
3. Lift the clockface straight up and then pull toward you to release clockface out of keyhole hangers.
4. Unplug the battery backup at splice, see picture:



5. Install clock hands taped to front of clock, see pictures:

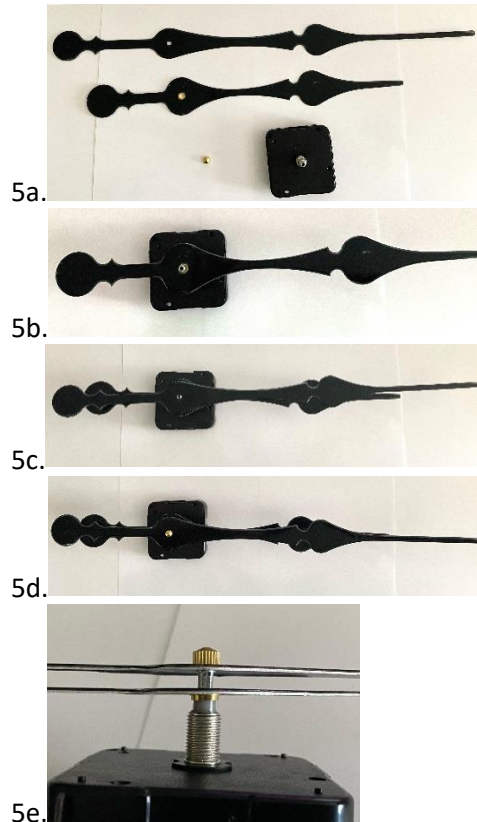
Your clock came with the hands taped to the front of the clock for safe shipping.

Please remove the hands from the clock face and unscrew the gold cap off the top of the mechanism already attached to the clock (5a).

Then you will install the shorter hour hand (5b) making sure it is pushed down firmly but being careful not to bend the hand.

You will do the same with the longer minute hand (5c) and screw the gold cap back on top over the hands(5d).

The clock hands should now be parallel with one another (5e). Make sure they are straight, creating an even space between the length of the hands and they are not touching one another.

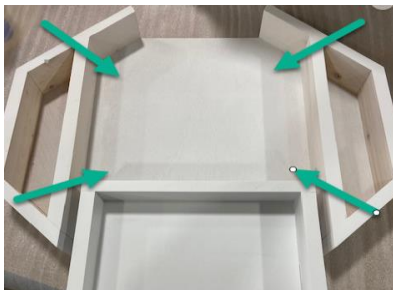


Step 3: Mounting the Clock to You Wall

1. Locate two studs in your wall. Because of the weight of the clock, we only recommend mounting into two studs. Could you get away with one stud and on the other side using a heavy-duty wall anchor or two screws vertically into one stud? Probably, but we can't recommend that.



2. After you have the studs marked on the wall, screw through the backplate of the clock housing into the studs. Make sure the clock housing is tight to your wall.

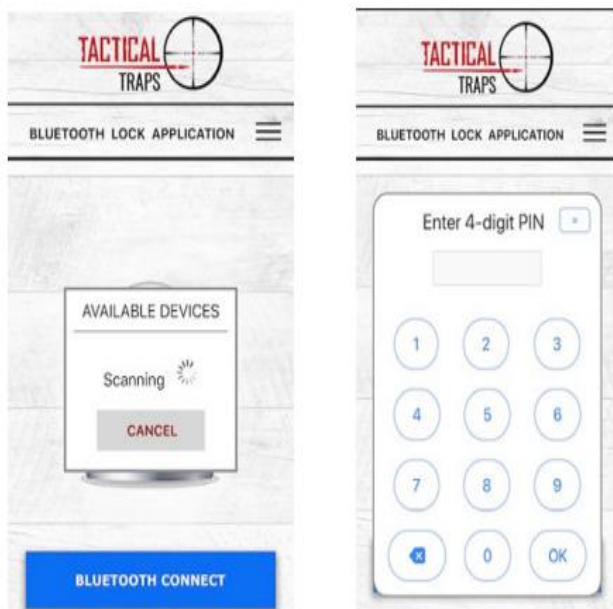


3. Add one AA battery in the clock mechanism located on the back of the clockface. Plug the battery backup cord back in, then put the clockface on the mounting plate attached to the wall locking the 2 bolts into the keyhole hangers and center the drawer. Once centered, make sure the drawer locks by pushing up into the clockface.

Step 4: How the Bluetooth Lock Works

Your Tactical Clock has been upgraded to our new Bluetooth lock. Included with your clock are 2 RFID keycards. You can find those taped to the clock in a small yellow envelope. (Save the 4-digit pin on the envelope, you'll need this to connect to Bluetooth. This 4-digit PIN is also printed on the face of your lock, which is harder to see.)

1. Update your phone's software if possible
2. Restart your phone
3. Turn on your Bluetooth
4. Go to the app store if you have an iPhone and search Tactical Traps. If you have an Android go to Google Play and search Tactical Traps. Download and install the app



5. After you download the app, open it up and click the Bluetooth connect button. Your phone will scan for the lock. When it's found enter your 4-digit pin number. You can find this number written on top of the envelope your key cards came in. It's also located on the lock face inside your clock. Please double check that Location Services is turned on in your settings, which is required of any Bluetooth device to work, and that all permissions are turned on in the app settings.

6. Click the unlock button after the app is installed and Bluetooth is connected to open your Clock

Step 5: Batteries

The RFID lock runs on 4 AAA batteries that should be changed every six or so months, depending on use. To change the batteries simply remove the plate on the RFID and open the unit. Then remove the old batteries and replace with good quality new alkaline batteries.

IMPORTANT: When the lock battery gets low, you will hear a series of beeps when you place the key over the top of the clock. When you hear that series of beeps... it's time to change the batteries. If you've used the sound setting card to disable the beep you will not hear this warning beep.

Step 6: Battery Backup Pack

If for some reason the batteries in your lock die before you change them - no problem! You can always get to your guns by using the battery backup pack that came with your purchase.

Here's what you do:

1. Place 4 AAA batteries inside your battery backup pack.
2. Locate the small auxiliary hole on the top of your clock (see picture).
3. Plug the backup pack into the hole as tightly as it will fit.
4. Scan one RFID card over the locking mechanism (where the orange dot sticker was) just like you normally would, and your clock will open.
5. When your clock is open, change your lock batteries



Step 7: Cutting the Foam to Fit Your Accessories

Note: For a video walkthrough go to: tacticaltraps.com/install

Lay the foam insert on the floor. Lay your gear on top. Push down snugly and trace them using a marker. Make sure if you're tracing your firearms that they are unloaded, and the chamber is empty!

Next, cut out the foam carefully using a sharp and brand-new razor/utility knife. It's recommended that you cut through at least $\frac{3}{4}$ of the foam for a handgun. The more time you take to do this correctly, the better your gear will fit. Don't be sloppy with this because the foam is designed to hold your gear in place when the unit lowers. If the cuts are not precise you run the risk of your gear falling out when opening the clock.



*****VERY IMPORTANT***** After you get everything cut out, remove the adhesive backing and carefully place it in your clock making sure it's lined up correctly. Once you verify its cut correctly, insert the included magnet into the cavity and secure it with 1 screw. This magnet should hold your gun tight in the compartment. **Foam by itself is not enough to prevent the gun from falling out.**

Step 8: Safety Rules to Consider

1. Don't store your firearm with a live round in the chamber.
2. Remember a tactical trap is not a safe; and although it's sturdy and well-built, it can be knocked off the wall or broken with enough force. In the unlikely event of that happening your gun could send a round through your house after being dropped! Yes, many new firearms are equipped with a drop safety to prevent this, but this is still something you should consider especially if you live in a home with children. You can take back a lot of things in life but a bullet is not one of them. Please remember that and be responsible when you store your gear.
3. If you have children living in your home it would be a good idea to move your firearms into a locked safe when you are not home or by your Tactical Trap. Most children will not understand how to work the product, but it's better to be safe than sorry. Plus, the whole purpose of a Tactical Trap is for quick access and if you're not home ... it makes no sense to leave your firearm inside of it.
4. Don't store more than 10 lbs. of gear inside the clock. That's more than enough weight to hold a handgun, spare mag and maybe a small flashlight.
5. Even though it takes considerable force to pry the clock open...it is not intended to serve as a substitute for a government regulated gun safe. A lock, any lock in the world including a bank vault can fail. Is it likely? No, but neither is lightning striking you, but it can happen. So, if you have young children living or visiting your home... don't allow them to play with the Tactical Clock. If you have older children living or visiting the house that you don't want messing around with your guns...take them out of the clock when you're not home and lock them in a safe. Use common sense when storing your firearms and you'll be just fine.

For other questions not answered here, see tacticaltraps.com/faqs or create a support ticket by emailing us at: support@tacticaltraps.com